

CHRIST EPISCOPAL CHURCH



Parish Profile 2022



TABLE OF CONTENTS

Prayer for Our Rectors Search	3
Our Mission/Our Goals	4
Who We Seek	5
Who We Are	6
Seeking a Beloved Community	8
Where we are	11
Church Campus & History	12
Christ Episcopal School	14
Christwood	15
Sunday Spiritual Development	16
Wednesday Nights	17
Worship life	18
Music ministries	20
Nurturing Ministries	23
Mission & Service	24
Parish Finances & Stewardship	28
Parish Demographics	29

PRAYER

FOR OUR RECTORS SEARCH

Most loving God, you know us better than we know ourselves. You know the needs of Christ Episcopal Church and our congregation. May the Holy Spirit lead us in our search and send us a pastor who is called into relationship with us and will lead us in unity and love to a deeper relationship with the risen Christ.

Amen



"We draw people to Christ not by loudly discrediting what they believe, by telling them how wrong they are and how right we are, but by showing them a light that is so lovely that they want with all their hearts to know the source of it."

— Madeleine L'Engle

MISSION & GOALS



OUR MISSION TO BE
CHRIST'S HEART, HANDS, AND FEET
IN THE WORLD BY SERVING OTHERS
AND PROCLAIMING GOD'S LOVE TO
ALL PEOPLE

OUR GOALS

- WORSHIP God in the Anglican liturgical tradition and making a joyful noise with music of all kinds
- LOVE all people. No exceptions
- SHARE God's transforming love with our community and our world
- CARE for each other, our community and our world
- INCLUDE all people in our community of faith
- TEACH the next generation about God's love and our faith
- LEARN and continually grow and deepen our faith
- PARTNER and grow with Christ Episcopal School and Christwood Retirement Community
- SERVE others with our treasure, time, and talent

DO YOU LEAD WITH LOVE?

ARE YOU AN EXPERIENCED
SPIRITUAL LEADER DEEPLY ROOTED IN
YOUR FAITH?

DO YOU HAVE A VISION FOR HOW
CHRIST EPISCOPAL CHURCH CAN NAV-
IGATE THIS TIME OF UNCERTAINTY TO
BECOME MORE WELCOMING, RELEVANT,
AND DIVERSE?

WHO WE SEEK

CHRIST EPISCOPAL CHURCH IS SEEKING A PRIEST WHO HAS THE FOLLOWING QUALITIES:

- An inspiring preacher and teacher who loves Jesus, is committed to strong Biblical and theological scholarship, and can make it accessible and relevant to the issues of today's world
- Has a pastor's heart to care for their flock and a desire to be in real relationship with the community
- Is a servant leader with a passion for innovative mission and outreach work
- Has a passion for beautiful worship and music (though being a great singer is not required!)
- Can strengthen the bond between Christ Episcopal Church and School and attract new families
- Is skillful at leading their flock through uncertain times and difficult conversations, especially where political perspectives may diverge
- Is a capable administrator of a growing and large parish with many components
- Is called by the Holy Spirit to be our Rector



WHO WE ARE

Christ Episcopal Church

has just over **1200 members**
and a current average

weekly attendance of **200**

**We are located in historic
Downtown Covington, LA
a short drive from
New Orleans**



Christ Church Covington Episcopal Men's Retreat March 2-5 2018



We are seekers and servers.

We are lifelong learners and questioners.

We are dancers and music-makers
and enthusiastic prayers.

We are generous, kind, and creative.

We are talented and capable.

We are involved.

We are adaptable and strong.

We include and welcome.

We are leaders and enthusiastic volunteers.

We are silly and serious.

We are young and old and in-between.

We strive for justice and healing.

We are helpers.



We are generous to our church
and our community.

We take care of each other.

We are strong and compassionate.

We love to cook and eat and drink
and enjoy life.

We show up.

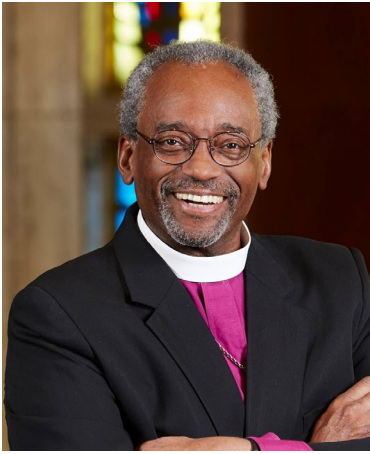
We roll up our sleeves.

We get things done.

We are joyful and love to have fun.

But most of all... we are a Family.





“Reconciliation is the spiritual practice of seeking loving, liberating, and life-giving relationship with God and one another, and striving to heal and transform injustice and brokenness in ourselves, our communities, institutions, and society.”

-The Most Rev. Michael Curry

SEEKING A BELOVED COMMUNITY

Although we strive to be inclusive, welcoming, and diverse, Christ Church is predominantly white. We seek to understand all members of our community. We have held workshops on civil discourse and racial reconciliation and look forward to continuing this path. We see this work as ongoing as we seek daily to more deeply understand and strive to follow Jesus’s example of how to live and love in the world.

Our Obstacles and Opportunities

We grow our membership by attracting families and youth. Like many churches, we are facing the crisis of our demographics. As our membership has aged, church attendance nationwide has decreased. We seek to attract more young adults and families to our church. We have an incredible opportunity to expand our demographic base by strengthening our partnership with Christ Episcopal School. We would like to be intentional about offering exciting programming and events that appeal to our school families and youth. We seek a rector willing to put effort into these ministries and strengthen the bond between the church and school by being a visible, caring presence in the church and school communities.

Division in the Parish

The cultural and national issues dividing our country are echoed in our church community. We are a diverse parish with progressive and conservative views co-existing. We have a wide range of views on social policies and how these issues should be incorporated into preaching, but we believe this work to be vital and ongoing to our growth as Christians and Episcopalians. We seek a rector who can preach the Gospel and address difficult issues from a Biblical perspective in a way that opens hearts instead of hardening them. We seek a pastor we can trust to shepherd us through the respectful dialogue necessary for reconciliation and lead us as Christians to love and respect all people in the way that Jesus did.



OUR CITY OF COVINGTON



You're Going to LOVE it Here!

The historic city of Covington was founded in 1813 nestled among three river systems, the Bogue Falaya being the most prominent and the river located next to Christ Episcopal Church. Covington offers a mix of small-town city living, waterfront properties, and properties with acreage for farming. Because of our proximity to New Orleans, many Covington residents commute the Causeway Bridge to jobs or visit New Orleans for its fabulous museums, cultural events such



as Jazz Fest, French Quarter Festival, Mardi Gras, and countless other festivals celebrating life and culture, concerts or theater events.

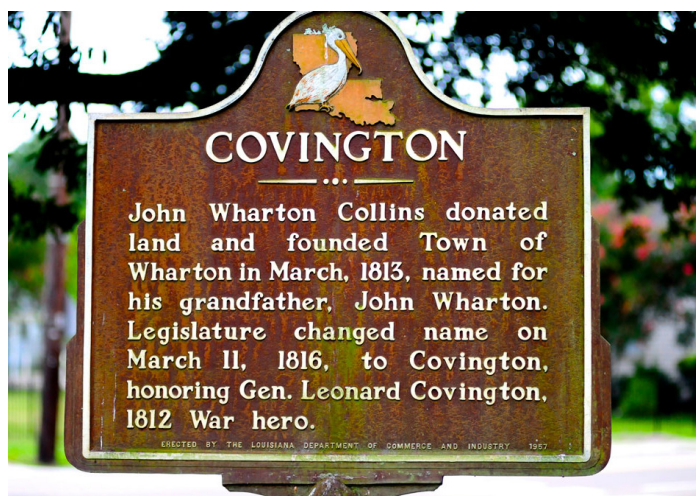
People of all ages will enjoy visiting the world class zoo and aquarium as well as spectacular restaurants. We are blessed with nearly year-round nice weather, and St. Tammany Parish is a sportsman's paradise with plenty of opportunities for boating, fishing, hunting and outdoor hobbies.

With three rivers and Lake Pontchartrain nearby, good fishing and beautiful sunsets are a part of life on the Northshore. The Tammany Trace, a repurposed rails to trail project, runs over fifty miles between Slidell and Covington. The lakefront trail makes for a perfect sunrise run, and our area boasts some of the most beautiful golf courses around.



The Northshore, as our area is called as it is on the north shore of Lake Pontchartrain, offers plenty to do. The historic downtown area where our church is located hosts events such as the Three Rivers Arts Festival, Covington Mardi Gras, weekly concerts at the Trailhead, the Rougaroux Race and a twice-weekly farmer's market with a bluegrass picking circle. You can dine at several outstanding restaurants or grab a bite at the local seafood joint.

Get drinks at the meticulously restored Southern Hotel's historic bar or catch a band at the Columbia Street Tap Room. Afterward, get a scoop of locally sourced and made Hoodoo ice cream. There's an eclectic shopping district with everything from clothes and art supplies to shoes and hardware. There are art galleries, great coffee shops and even an old-time hardware store and historical museum. The best part is we still have that small-town friendliness. It's no wonder Walker Percy made Covington his home and we hope you will too!



OUR CHURCH CAMPUS & HISTORY



HISTORIC CHAPEL & MEMORIAL GARDEN

Our Queen Anne Revival style chapel is on the National Register of Historic Places and was commissioned in 1846. It is used for smaller more intimate services on Sunday and throughout the week. It is also used for chapel services for the Early Childhood Campus. The Garden of St. Francis is an area set aside for the cremated remains of the deceased in the churchyard next to the old chapel. It was consecrated in 1987. Today, parishioners meticulously maintain the beautiful garden, and memorial plaques adorn its brick walls.



THE CHURCH

As the sleepy, small town of Covington grew, so did the congregation of Christ Episcopal Church. The chapel could no longer accommodate the growing parish. A capital campaign was conducted, and a new church was built directly in front of the existing building on a triangle of land that had been donated years earlier. The new English-style brick church was built in a cruciform shape and seemed enormous to longtime members of the congregation. The formal dedication ceremonies were held on April 15, 1967. Recent additions to our beautiful church include a large courtyard to accommodate informal gathering after services and a state-of-the-art sound system and live-streaming equipment.



OUR CHURCH CAMPUS & HISTORY

Located in downtown Covington, Christ Episcopal Church resembles an English village in the heart of Covington. The historic chapel, stately brick church, cottage-style buildings, and green space reflect our Anglican roots and respect for our environment. The many buildings and variety of meeting spaces allow our congregation to host small groups, parish-wide events, and provide community organizations with a place to meet. The church campus is located between beautiful Bogue Falaya Park and the Christ Episcopal School Early Childhood Campus.

ADMINISTRATION BUILDING

The historic renovated home is located across the street from the church and has several offices for clergy and staff. The multipurpose kitchen serves as a casual meeting and dining space for lunch and as a workspace for volunteers. The house was formerly the headquarters of the St. Tammany Art Association.

HOLZHALB HALL

The building is a beehive of activity that includes the Commons Room, the parlor, and the kitchen. The Commons room is used for a variety of parish events and serves as the lunchroom and meeting space for the students and faculty of Christ Episcopal School's Early Childhood Campus. The parlor is an intimate room used for conversation and small gatherings. Our recently updated kitchen is in almost constant use all year long as it is used for meal service by the Early Childhood Campus during the school year and Christ Episcopal Enrichment Program (CEEP) during the summer. It is also used for receptions following funerals, weddings, and Third Sunday concerts as well as dinner on Wednesday nights.

JAHNCKE HALL

Jahncke Hall was built in the 1980s to provide additional meeting space, classrooms, and office space and was expanded in later years to include a youth center and kitchen. This versatile space allows Christ Episcopal Church to offer the youth a dedicated place in which to meet. a large courtyard to accommodate informal gathering after services and a state-of-the-art sound system and live-streaming equipment.





ST. CECILIA HOUSE

St. Cecilia House is the second oldest historic building on the Christ Episcopal Church campus, reflecting the beautiful architecture of the surrounding neighborhood of Old Covington. The building has a long history of functioning as a meeting space for the community. In 1907, a group of young women who called themselves Minerva's Chosen Band, founded Covington's first library here which eventually became a meeting hall as well. In 1947, the building was purchased by Christ Episcopal Church to be used as a parish hall. Over the years, it has served as the rector's house, classrooms for Christ Episcopal School, and as a meeting space for organizations and groups in the community. Twelve step recovery groups meet here every week day and have for over twenty-five years. Our newly renovated St. Cecilia House has a dedicated space for choir rehearsals, a large conference room, and small-group meeting spaces.

Christ Episcopal School opened in 1984 as an outreach of Christ Episcopal Church. It began with 34 students in grades 1-4. Since then, Christ Episcopal School has grown considerably, and a second campus was opened adjacent to Christwood in 1997. Now, Christ Episcopal School is an independent, co-educational college preparatory day school with 600+ students. The Christwood Boulevard Campus houses grades 1 through 12, while the Early Pre-K, Pre-K, and Kindergarten classes, the Early Childhood Campus, remain on the campus of Christ Church.

Christwood was developed to address the needs of aging parishioners and residents of the Northshore. The Continuing Care Retirement Community opened in May of 1996 and is located on more than 117 beautiful acres adjacent to the property of Christ Episcopal School.



**CHRIST
EPISCOPAL
SCHOOL**

Growing With Grace



**An Episcopal Day School
Grades PreK through 12th Grade**



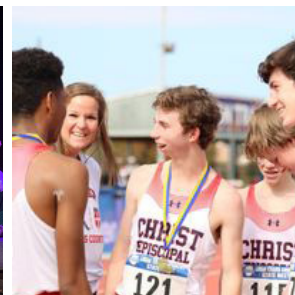
Founded by Christ Episcopal Church in 1984,

Christ Episcopal School (CES) is an independent, co-educational college preparatory day school for students PreK through 12. The school, with over 600 students, is set on two wooded campuses in Covington, Louisiana. The elementary and upper school campuses are on the grounds adjacent to Christwood Retirement Community allowing for opportunities for intergenerational collaboration throughout the school year.

The philosophy of Christ Episcopal School reflects the reasons for its origin: to provide a superior academic opportunity within the framework of a warm and nurturing Christian environment. Intellectual curiosity is prized, and students are challenged to think independently and critically and to act creatively and collaboratively. Christ Episcopal grows lifelong learners with a strong Christian ethic and morality and prepares them to become involved and responsible citizens. Students are called to act justly and to call others to do so. They are challenged to imitate Christ and to instill peace and kindness, at school and in the world.

The Upper School is a place where students can be themselves and learn more about what that means in a loving, accepting environment. Individuality and questioning are nurtured here. The main upper school building is referred to as the Center of Inquiry. Students participate in the award-winning performing arts program, the speech and debate program, and numerous athletic pursuits.

CES also offers a unique wilderness education program that teaches kids the skills to get out in nature and enjoy the beauty of God's natural world culminating in high school with trips to Yosemite and Glacier National Park. The faculty and coaches at CES are passionate about teaching not only school subjects, but how to be a good person in the world. They truly want to be here. Christ Episcopal Church and its clergy support the school with chapel and special services. One of our goals for the future is to strengthen the bond between the church and school and create more opportunities for school families without a church home to come to Christ Episcopal Church.



Christwood

In 1991, the Rector of Christ Episcopal Church, Steve Holzhalt, with the support of the Vestry, announced to the congregation and to the community that, "With the aging of America, and of St. Tammany Parish, we must step forward now to fulfill our mission from God as a ministry to the elderly." Thus, the idea of Christwood, a continuing care retirement community was born.

Soon after that, Steve and vestry member Jack Lohman began researching and visiting communities. During this same time period, mothers of school age children prevailed on the church to start a school first. Christ Episcopal School opened 37 years ago and Christwood followed, opening 25 years ago. Situated on 117 beautifully landscaped acres, Christwood serves over 250 residents today. As the Northshore's only full-service Life Plan community, Christwood offers 161 independent living apartments and cottages, 34 assisted living apartments, 30 skilled nursing skilled nursing residences with onsite rehabilitative care and 29 residences at Longleaf, a memory care community. Christwood is now complemented by the Community Center at Christwood, a multipurpose fitness center that serves residents of the greater Northshore Community aged 55+. Designed to promote health and well-being, the center has become a hub of community-wide activities that include frequent social events, musical performances, health fairs, on-site physical therapy in the gym and pool, and wellness educational programs. In 2021, the community formed a Master Plan Task Force with the objectives of developing plans for an outdoor sports and recreational complex along with additional residential offerings.



SUNDAY SPIRITUAL DEVELOPMENT



THE VINE

The classes are offered in a 4-week series and each series has four workshops to choose from and are held in rooms in and around the Parish Hall. Each workshop or group has a specific focus but is held together by a central theme. The themes change every 4 weeks. We strive to make sure there are always workshops that are geared specifically towards younger children and other workshops that are specifically geared towards those of us who are still “young at heart.” We hope to provide different ways that individuals or families can engage in faith.

CIRCLES OF FELLOWSHIP & LEARNING

Small groups are an integral part of our vibrant parish life. They provide support and nurturing for our faith journeys and strengthen the bonds among the people of our congregation. They are facilitated by clergy and lay members of the congregation. Throughout the week, intimate small groups meet to fellowship and study. Here are a few of the small group opportunities we have offered in the past few years:



Walking the Mourner's Path
Grace Gathering
Gratitude Gals
Men's Group
Brotherhood of St. Andrew
Enneagram workshops
Bible study
Racial reconciliation
Civil discourse workshops
Marriage workshop
Parenting workshops
Connections group dinners

WEDNESDAY NIGHTS



Wednesday Nights provide a needed pause in our week for fellowship and spiritual development. A delicious dinner is offered followed by formation opportunities for every age group making it convenient for families and drawing members of the larger community.

CHILDREN & YOUTH

ARK NURSERY

Ark Nursery is for ages 2yrs-Kindergarten. Our youngest children start learning to form friendships with others around them, and we help them interact and build their faith and friendships through stories, crafts, and songs that guide them to Biblical truths.

SLIDE-IN

Slide-In is for grades 1-3. Children experience the mystery and intrigue in Christ through Bible lessons on love, friendship, courage, and respect. All lessons are reinforced with games, drama, and crafts.

BLAST-OFF

Blast-Off is for grades 4 and 5. The children start with fun ice breaker games, followed by Biblically based lessons that focus on love, friendship, empathy, identity, social media issues and respect. The atmosphere encourages group discussion of relevant topics pre-teens face today.

YOUTH CCY

Youth CCY is for grades 6-12. Students gather to eat, share stories, play, and learn together on Wednesday evenings from 5-7:15. Beginning with dinner in the Parish Hall, at 5:30 we move into the Youth Center for games, and after some spiritual lessons, we end in youth-led Compline, a quick contemplative prayer service.



ADULT FORMATION

Adult formation varies throughout the church year. Offerings are clergy and lay-led and include lectures, discussion groups, book studies, and writing classes. We are lifelong learners, passionate about deepening our faith. Classes are given on a rotating basis and have included writing workshops, book studies, comparative religion classes, Theology on Tap and even a study on the Gospel according to Ted Lasso!

Education for Ministries (EFM)

EFM is a four-year course of study, prayer and reflection led by trained mentors. Class members study the Old and New Testaments, church doctrine and history, and the spread of Christianity.



OUR WORSHIP LIFE

REGULAR SERVICES

Worship at Christ Church is a blend of tradition, innovation, and creativity. Music ranges from Anglican standards to opera, jazz, gospel, and even rock and roll. But the heart of worship is the liturgy and Eucharist. Sunday Services are held at 8:00 AM (Rite I), 10:00 AM (Rite II with traditional and contemporary music), and 6:00 PM (Jazz piano service in the chapel). We recently combined our 9:00 and 11:30 services into one service at 10:00 AM and moved our Christian formation to 9:00 AM. The change allowed us to rekindle our sense of community, especially after the separation forced by the pandemic. We hold special services throughout the year that are built around a theme or type of music. In addition, daily morning prayer is currently held via Zoom.

HEALING SERVICES

A weekly healing service is held in the historic Chapel at noon on Wednesdays within a Rite II celebration where the healing nature of the Holy Spirit is invited into our midst. When someone is ill or in recovery, they may receive the laying on of hands and the anointing with oil by a priest, also called Holy Unction. The laying on of hands, the oil and the sacramental language used from the Prayer Book represent the outward and visible sign which signifies the inward and spiritual grace being prayed to bring restoration to wholeness.

EVENSONG MUSICAL SERVICE

Our Evensong is a beautiful candlelit evening church service that is a sung rendition of vespers following the Anglican tradition. It is a beautiful way to end the day and a cherished transition for our community.

PENTECOST

For this service members of the congregation simultaneously read scripture in different languages. The service ends with a joyful interpretive dance complete with a radiant dove of the Holy Spirit.

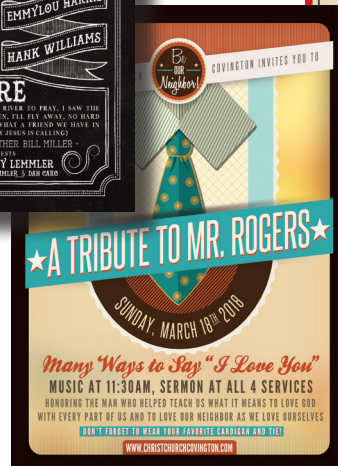
BLUE CHRISTMAS SERVICE

This service is for anyone who is or has been brokenhearted during the "most wonderful time of the year." The Blue Christmas mass is a time for those struggling due to the loss of a loved one, illness, relationship challenges, painful memories from holidays past or seasonal depression to pause and lean into their sorrow and to be reminded that the light of Christ shines even in the darkest parts of our lives.



SPECIAL MUSIC MASSES

A unique feature of Christ Episcopal Church are the special music masses. They are a great opportunity to invite friends to church and are always meaningful and uplifting. A few of the past Masses we have enjoyed are "If I Can Dream: A Tribute to Elvis Presley," "R.E.S.P.E.C.T: A tribute to Aretha Franklin," and "I Will Always Love You: A Tribute to Dolly Parton." A U2charist, featuring music by the Dublin band U2, coincided with that band's concert in the Superdome. Other music masses spotlight blues-based and spiritual roots music and themes, including Sesame Street, Mr. Rogers, Bob Dylan and The Beatles. A JazzFest Memorial Mass celebrated the lives of musicians whose music has touched our hearts, while the Celtic Spiritual Mass brought forth song and prayer based on those roots. These masses are a wonderful part of our church tradition, and we look forward to them.



MUSIC MINISTRIES

Music is a very important part of our culture at Christ Episcopal Church and a part of our programming that we consider a community outreach, bringing people through the church doors who may not be there otherwise. There is something for everyone here. Not only do we have a wonderful traditional choir, organist, and violinist, but our talented pianist rearranges hymns into jazz pieces and shares his gifts both at the 6:00 PM piano service in the chapel and each month with his Celebration Band at the 10:00 service. Occasionally, we worship with a special music Mass celebrating the work and spiritual messages of secular and gospel music. We enjoy a host of other musical events and programming outside of worship such as Jazz in January and the Third Sunday Concert Series.



CHOIR

The church has been blessed with excellent choir/music directors, organists, and pianists over its long history. The choir has a loyal and talented group of volunteers who are like a family. In addition to Sunday morning services, the choir is periodically part of special events such as Evensong and funerals. Over the years, the music program has been expanded during Holy week with considerably more complex liturgical music on Maundy Thursday aGood Friday as well as the Easter Sunday sung services.



THE CELEBRATION BAND



The Celebration Band makes a joyful noise every fourth Sunday. The band is led by a renowned New Orleans pianist and a host of talented musicians who bring a dynamic contemporary experience to worship. There is also a jazz piano service in the historic chapel each Sunday at 6:00 PM.

Invitation to our NEIGHBORS



JAZZ IN JUNE, formerly known as **JAZZ IN JANUARY** is an annual three-day concert series featuring local and world-renowned musicians and culminates in a special musical Mass hosted by Christ Episcopal Church. It attracts people to the church that may not ordinarily be in church and offers them a glimpse of God's love through music. Proceeds from the Jazz in June have benefitted various charities, including the Musicians Clinic of New Orleans. Musicians visit Christ Episcopal School during the festival, connecting the church and school in joyful celebration. It truly takes a village to put on this festival, and it is a labor of love and gift to the community. This year our concert series

THIRD SUNDAY CONCERTS

Formed in 1990 and still going strong, the Third Sunday Concert Series is an outreach of Christ Church and features area musicians and singers on the 3rd Sunday of each month, September through May. Summer concerts are hosted in The Atrium at Christwood in July and August. All concerts begin at 5 PM and are free and open to the public. A major attraction of the series is the wine and hors d'oeuvres reception which follows each concert. Not only is it an opportunity for the audience to meet and talk with the guest artists, but it also provides an opportunity for the audience to visit with friends made over the years of concerts at Christ Church. Many of our Christwood residents enjoy these concerts as do residents of greater St. Tammany Parish. Third Sunday Concerts have featured opera singers, jazz trios, pianists, Broadway show tunes, and special Christmas presentations.

BLESSING OF THE ANIMALS

Each year in celebration of the Feast of St. Francis of Assisi, the church and community are invited to come together in the outdoors and bring animals of all kinds to Bogue Falaya Park for a blessing and fellowship. Christ Episcopal School also holds blessings at the Christwood Blvd. campus and the Early Childhood campus. In addition to the typical family pets, there have been blessings for snakes, lizards, horses, goats, and a pig.





NURTURING MINISTRIES

LAY PASTORAL MINISTRY

In 2016, a discussion about ways to prioritize pastoral care in the parish was initiated, and Viktoria Gotting's Good Shepherding School of Lay Pastoral Ministry (LPM) was selected as the training program for volunteers. Lay Pastoral Ministers are trained to support the clergy in their pastoral duties. Our LPMs are an integral part of our caring for each other in times of crisis, suffering, or isolation. They provide love, prayer, listening, and presence. They are also trained to offer the Eucharist from the reserved sacrament. Six groups of three LPMs, with the associate Rector, provide pastoral support in six-week cycles.

PRAYER CHAIN

We believe in intercessory prayer and are blessed with a dedicated prayer team. The Pastoral Prayer Vigil, held once a year, evolved into a prayer chain in 2018. Prayer chain members pray for anyone who has requested prayerful support. Prayer requests can anonymously be placed in a designated box on our fence or called or emailed to the group facilitator. The group meets once a month to review and update prayer requests and support each other in their ministry of prayer.

CARE TEAM

The Caring Ministry of Christ Episcopal Church is a volunteer group that makes services available to other members of the parish in times of special need. They coordinate and offer compassionate assistance by cooking, babysitting, providing transportation to appointments and sending notes of encouragement and sympathy.



MISSION & SERVICE

Christ Episcopal Church has always been committed to serving its community. We have long supported and continue to support Habitat for Humanity, The Food Bank, the Humane Society, Tom Turkey Program, Christmas giving tree, and of course, each summer we host and present CEEP (Christ Episcopal Summer Enrichment Program) for at-risk students in grades 3-6. But during the pandemic, our congregation felt the pull to do more to be Jesus's hands and feet in our community and the Christ Episcopal Mission Commission was born. We continue to support many other outreach programs in addition to our work with the Mission Commission.



MISSION COMMISSION

The Mission Commission was formed to both assist local nonprofits in our community who are doing meaningful work and to give our congregation an opportunity to provide hands-on service to our neighbors. Each month we partner with a non-profit in our community and support them both financially and with our hands and hearts. Some of our partners have been Just Love Your Neighbor, Equine Reflections, James Samaritan Center, Family Promise, Ainsley's Angels and Open Table. Not only have these opportunities been meaningful, but they also have allowed us to meet and partner with other churches and innovators in the community working for change.





In November we hosted a Gala to celebrate our 175th anniversary at the Southern Hotel. The proceeds from this wonderful evening went to fund our Mission Commission. Our current goal is to fund a local grant program where local nonprofits can apply for small grants to not only meet their mission but also allows them to have a better chance of securing larger governmental grants.



The parishioners of Christ Episcopal Church are a generous group and embody the mission of our church: to be Christ's heart, hands, and feet in today's world. Just a few blocks away from our church, there are many families who struggle to secure the needs of daily life. In addition to the Mission Commission, we have ongoing community outreach that addresses specific needs in our geographic area and beyond

CHRIST EPISCOPAL ENRICHMENT PROGRAM (CEEP)

The Christ Episcopal Enrichment Program (CEEP) is a dynamic summer experience for students in grades 3-6 who are at risk due to poverty. The children's day includes breakfast and lunch, integrated academic classes taught by certified teachers, enrichment sessions and activities, character development lessons, goal setting, and conflict resolution. The church supplies funding and space for CEEP, and parishioners volunteer as tutors, classroom aides, counselors, and kitchen staff.

TOM TURKEY

Tom Turkey became a tradition at Christ Episcopal Church in 2003. A few weeks prior to Thanksgiving, parishioners take feathers marked with needed items and return them to the church. The Youth Group assembles the baskets and works together with a nearby church to distribute the food.

THE CHRISTMAS GIVING TREE

The Christmas Giving Tree is put up in the Narthex the Sunday after Thanksgiving. Names of needy families are given by social service organizations and some of our Mission Commission partners. Ornaments are placed on the tree with the first name, age, and item desired by an individual in need. Parishioners select ornaments from the tree and return gifts that are delivered to families.

THE NORTSHORE FOOD BANK

We are a year-round drop-off point for food for the food bank. Parishioners and students of Christ Episcopal School donate money, food, school supplies, and personal items throughout the year in addition to several directed drives. The Food Bank is the primary food source for the food insecure in St. Tammany Parish.





MISSION TRIPS

Yearly Youth mission trips focus on service and community building both in Louisiana and throughout the country.

TWELVE-STEP MEETINGS

Christ Episcopal Church has provided a safe and consistent meeting space to area twelve-step recovery groups for over 25 years. Alcoholics Anonymous and Al-Anon meetings are held Monday through Friday and are open to the greater community. A healing grace is found in these meeting rooms as well as in the Church.



VESTRY LEADERSHIP

The Christ Episcopal Vestry consists of twelve members of the congregation who are in good standing and are elected for a three-year term on a rotating basis. The Rector is a member of the vestry and leads the monthly vestry meetings. We are blessed with a capable vestry who not only leads the lay ministry of the church, but also assists the rector in administrative duties, financial matters, and to achieve the rector's vision and church's mission.

PARISH FINANCES & STEWARDSHIP

According to Matthew 6:19-21 and Mark 12:42-44, stewardship is an issue of the heart. It means defining our values and priorities as Christians and reshaping our lives to reflect in real and practical ways those values and priorities. We as Christians are stewards of all that God has given us here on Earth. Out of love and gratitude for these gifts, members offer time, talent, and financial resources to serve God and his people. The Stewardship Committees help to coordinate and plan annual events that support the ongoing ministries within the church as well as in the extended community. Our recent successful capital campaign is a testament to the commitment of the parishioners to our church home. Besides allowing the church to make much needed repairs and renovations to the physical plant, it also offered intangible results. Parishioners, clergy, and staff gathered as one, growing in their dedication to maintaining the resources gathered during the three years of the campaign. Additionally, in the fall of 2018, a committee was formed to restructure the Endowment Board of Christ Episcopal Church. The purpose of the Endowment Board is to facilitate the acquisition of assets for the benefit of our church. This growing fund, at the discretion of the Vestry, is used to assist in the mission and ministry of the parish. The board has worked to increase the awareness of planned giving opportunities so that the fund will continue to grow. In addition, the Legacy Society recognizes people who have made lifetime or testamentary gifts to the church.

CHRIST EPISCOPAL CHURCH & COVID

Like many churches, Christ Church was blindsided by the effects of the global pandemic. Not being able to be together with our community deeply affected us, especially our older members of the congregation. Fortunately, we were able to pivot quickly to online worship services and maintain some sense of connection through Zoom formation classes, book studies and coffee hours. We learned many lessons during the shutdown and were able to upgrade our technology infrastructure to allow for hybrid and in-person worship experiences. Additionally, several of our small group classes and book studies have continued to meet online and have attendees from all around the country.



PARISH DEMOGRAPHICS

We have a total of 1208 members

566 Households

807 Adults

401 Under age 18

67 Non-Episcopalian Spouses & Adult Children who are Active

127 are ages 18-24

96 are ages 25-39

158 are ages 40-54

94 are ages 55-64

162 are 65-74

170 are 75 and older

300 Contributing Units

Average Sunday Attendance 200

Average Sunday Attendance Pre-Pandemic 400

*BASED ON THE MOST CURRENT DATA AVAILABLE. THE MINISTRY PROFILE
NUMBERS REFLECT THE LATEST PAROCHIAL REPORT.

A large word cloud of religious and theological terms, with 'Scripture', 'Reason', 'Grace', 'Inclusive', 'Liturgy', 'Peace', 'Catholic', 'Equality', 'Holy', 'Tolerance', 'Family', 'Healing', 'Freedom', 'Loving', 'Home', 'Open', 'God', 'Welcome', 'Questions', 'Apostolic', 'Advent', 'Baptismal', 'Covenant', 'Anglican', 'chant', 'Open', 'God', 'Freedom', 'Liturgy', 'Healing', 'beautiful', 'calming', 'Psalter', 'prayer', 'Pillars', 'Scripture', 'Reason', 'Grace', 'Inclusive', 'Liturgy', 'Peace', 'Catholic', 'Equality', 'Holy', 'Tolerance', 'Family', 'Healing', 'Freedom', 'Loving', 'Home', 'Open', 'God', 'Welcome', 'Questions', 'Apostolic', 'Advent', 'Baptismal', 'Covenant', 'Anglican', 'chant', 'Open', 'God', 'Freedom', 'Liturgy', 'Healing', 'beautiful', 'calming', 'Psalter', 'prayer', 'Pillars'.



www.christchurchcovington.com